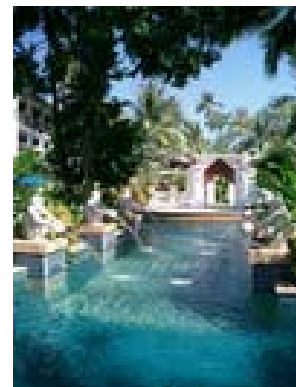




### General Overview

Located at Choeng Mon Beach, 4 km. From the airport, this unique resort comprises thirty-four authentic teakwood rice barges converted into boat suites and eight low rise Southern style guestroom buildings.



### Accommodation

210 rooms including 11 poolside terrace, 115 premier, 8 honeymoon suite, 42 deluxe and 34 boat suites, all rooms have a bathroom with bathtub, hair dryer, 220V electrical points, complimentary bathroom toiletries, personal safe, mini bar, color TV with in house videos and satellite reception, private large terrace with garden or pool view. Coffee and tea making facilities are available in all rooms except deluxe rooms. Non-smoking rooms are available.

### Sport and recreation facilities

- 2 swimming pools
- Windsurfing, canoeing
- Scuba diving school (Gold Palm-PADI) - closed until 16<sup>th</sup> December 2008 due to the rainy season
- Snorkeling
- Table tennis, Library

### Food and Beverage

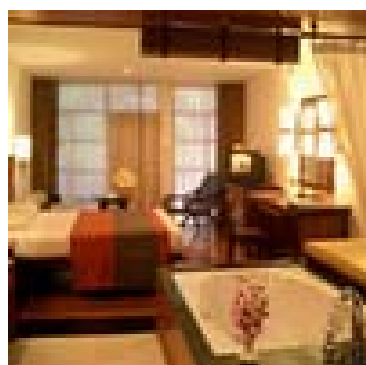
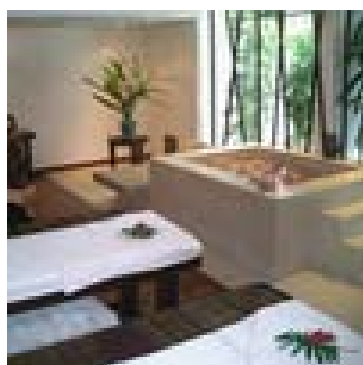
- **Boat Cafe : 07:00 - 22:00 hrs.**  
American Breakfast, Lunch and Dinner
- **Captain's Choice Restaurant : 11:00 - 23:00 hrs.**  
Seafood, Thai cuisine, Western specialties and Theme Nights.
- **Pool Bar : 11:00 - 23:00 hrs.**  
Light lunches and cold refreshments available by the pool, Throughout the day.
- **Manao Bar : 12:00 - 01:00 hrs.**  
Cocktail lounge with live entertainment.
- **Room Service : 07:00 - 22:00 hrs.**  
Ideal for intimacy.
- **Boat Pool - Garden Pool : 08:00 - 18:00 hrs.**

### Transportation

From	Distance	Time	By
Airport	4 kms.	10 minutes	Car
Chaweng	7 kms.	10 minutes	Car
Nathon	25 kms.	30 minutes	Car
Surattani	70 kms.	120 minutes	Bus+Ferry

### Other Facilities

- Imperial Spa
- Car rental counter
- Tour Counter
- Golden barge souvenir shop
- Tailor shop
- Doctor on call 24 hours
- Laundry and dry cleaning service
- Baby sitting
- Foreign exchange
- Traditional Thai Massage
- Jacuzzi - Steam - Bath
- Electricity 220V 50 Hertz





## Meeting room sizes

Meeting rooms	Size ( mtr. )	Area ( sq.m )	Classroom	Theater	Cocktail Party
Choengmon 1	17.5 x 12	210	150	250	300
Choengmon 2	16 x 10	160	100	150	200
Choengmon 3,4	9 x 5.9	53.1	20	40	50
Sala ( Roofed & open sides )	18.4 x 9.2	169.3	-	-	200



## Meeting room equipment

- **Sound**  
Table microphone, standing microphone, amplifier and equalizer
- **VDO equipment**  
TV monitor multi system, VDO player multi system
- **Projector equipment**  
Slide projector, overhead projector, LCD
- **Miscellaneous Equipment**  
Drop screen, podium and stage

## Menu Selection

Breakfast ( buffet ); coffee breaks, cocktails, international buffet, Thai set menus, Thai buffet, Western menus ( lunch, dinner ), BBQ buffet, seafood buffet, for more information please contact The Imperial Boat House Hotel, Food and Beverage Department.



## Our conference package includes:

- Registration desk
- Welcome drink
- Overhead projector
- Screen
- Flipchart with markers
- Notepad and pencil
- Microphones
- Refreshments

## Wedding packages

Please ask for our "wedding package" brochure or visit our web site for more details.

## Theme Nights

Thai cuisine and classical dance night, Taste of Asia, Bella Italia, BBQ and Polynesian dance show and many more... Ideal for company or association meetings. Conduct your team building or brain storming session in this tropical environment. We will handle your event or celebration with care and personalized service to make it an outstanding success.

**F**or the group package of 20 people or more, one complimentary person is included.

## Reservation office

Sales and reservations office  
c/o The Imperial Queen's Park Hotel  
199 Sukhumvit Soi 22 rd. Bangkok 10110 Thailand  
Tel: +66(0)2261-9000 Fax: +66(0)2261-9518  
E-mail: [reservation@imperialhotels.com](mailto:reservation@imperialhotels.com)  
[Sales@imperialhotels.com](mailto:Sales@imperialhotels.com)  
[www.imperialhotels.com](http://www.imperialhotels.com)